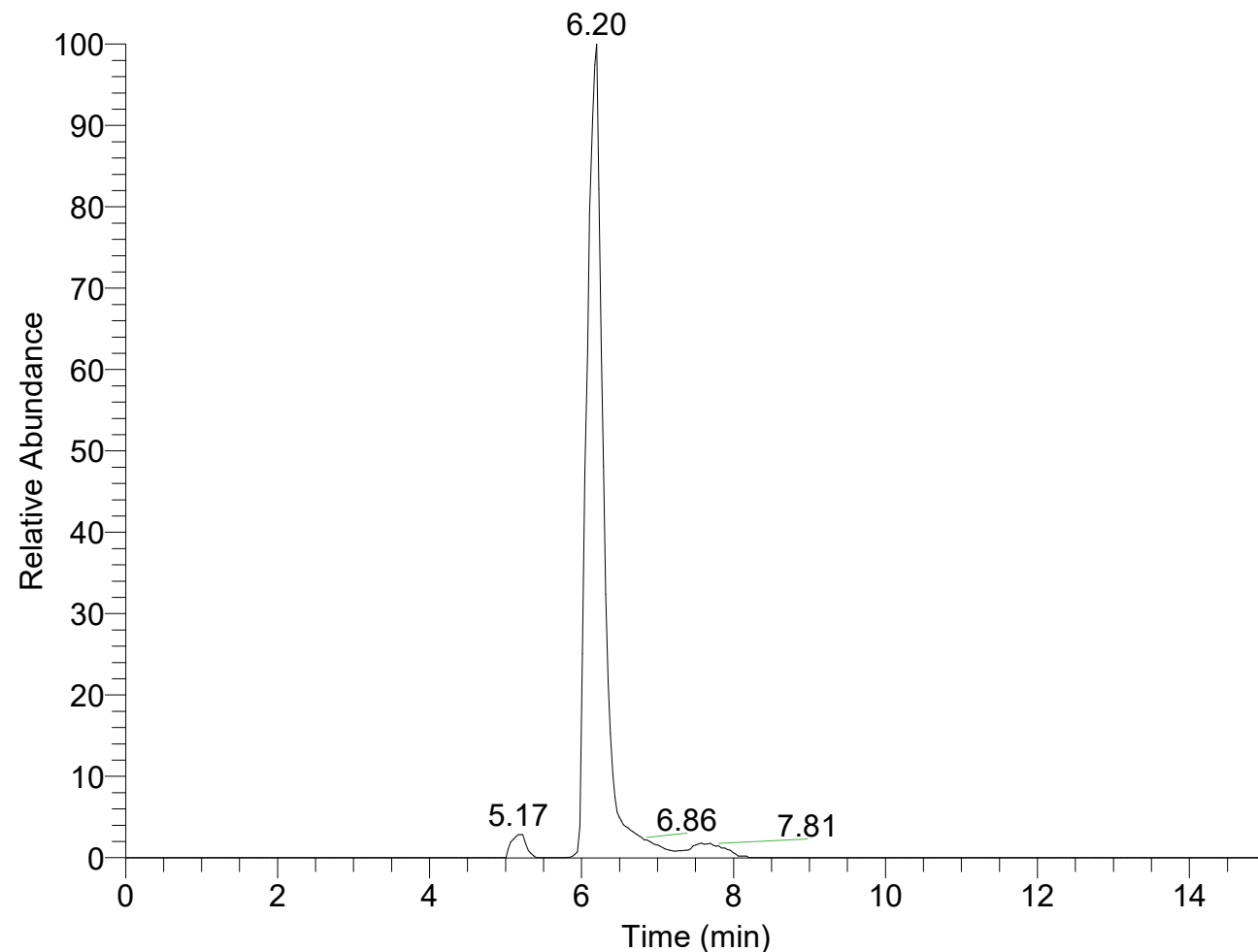
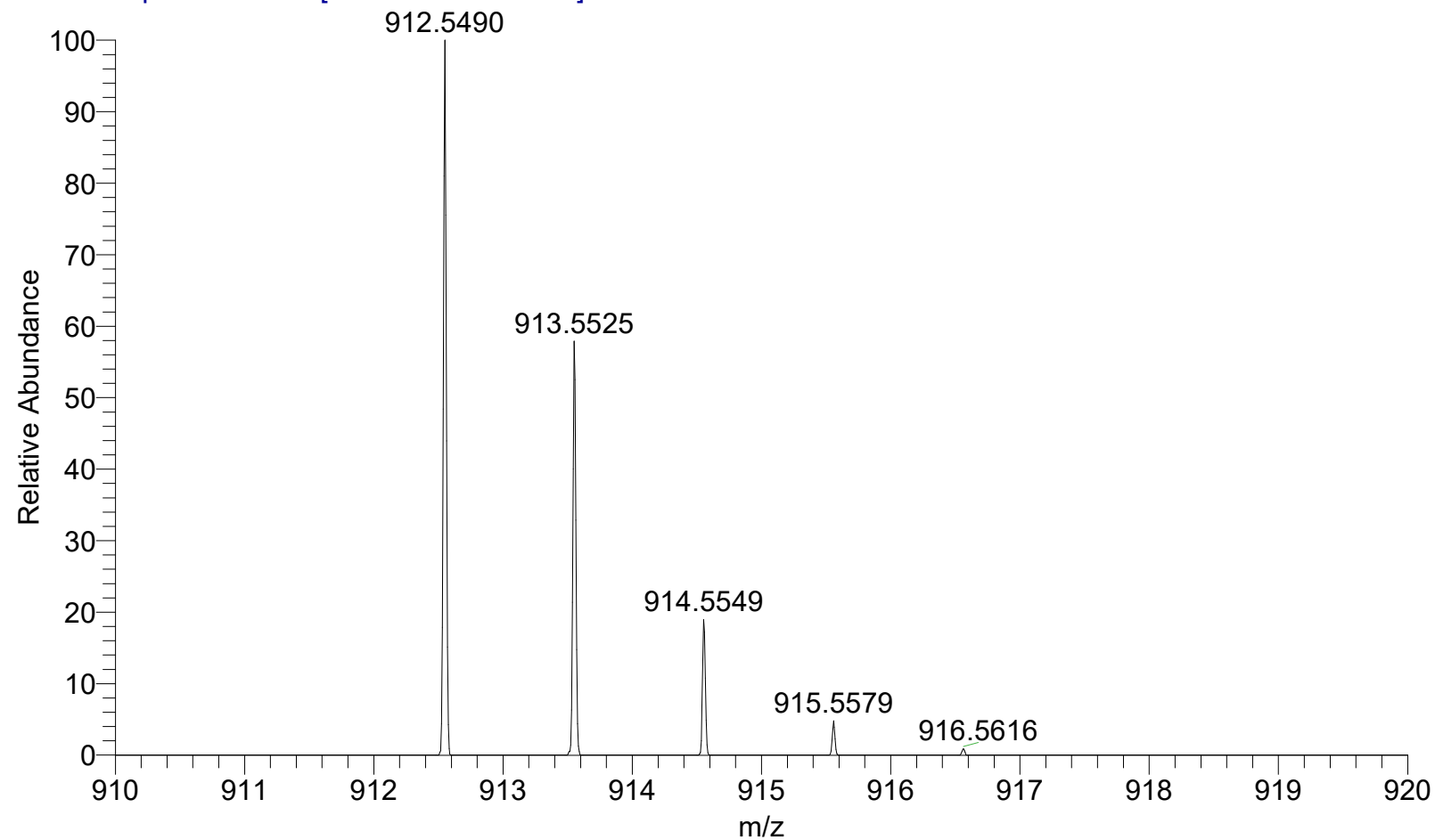


RT: 0.00 - 15.01 SM: 7B

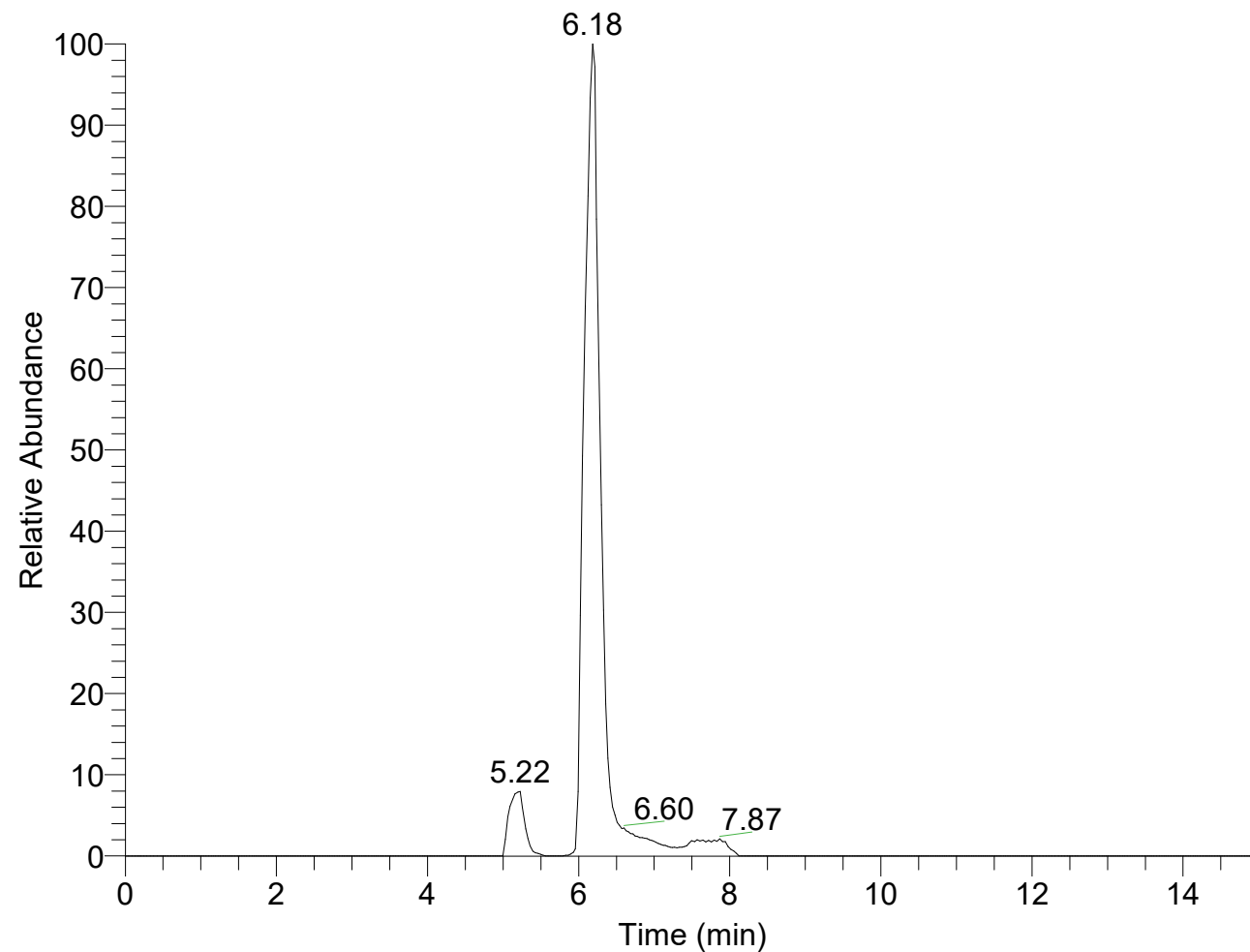


NL: 4.60E6
m/z=
912.5424-912.5516
F: FTMS - p ESI Full
ms
[70.0000-1000.0000]
MS point_01mg_mL

point_01mg_mL #1765 RT: 6.23 AV: 1 NL: 3.79E6
T: FTMS - p ESI Full ms [70.0000-1000.0000]



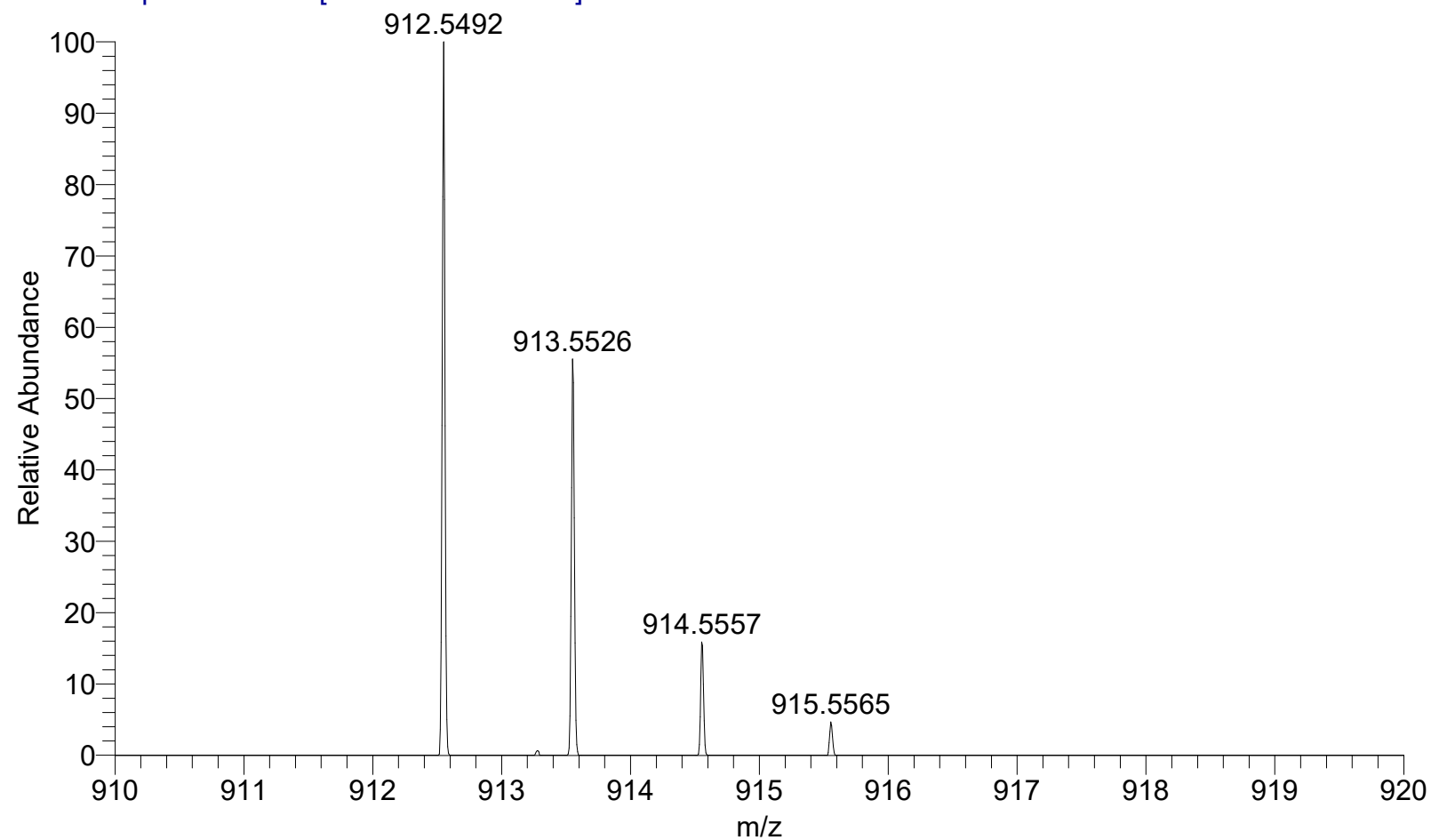
RT: 0.00 - 15.01 SM: 7B



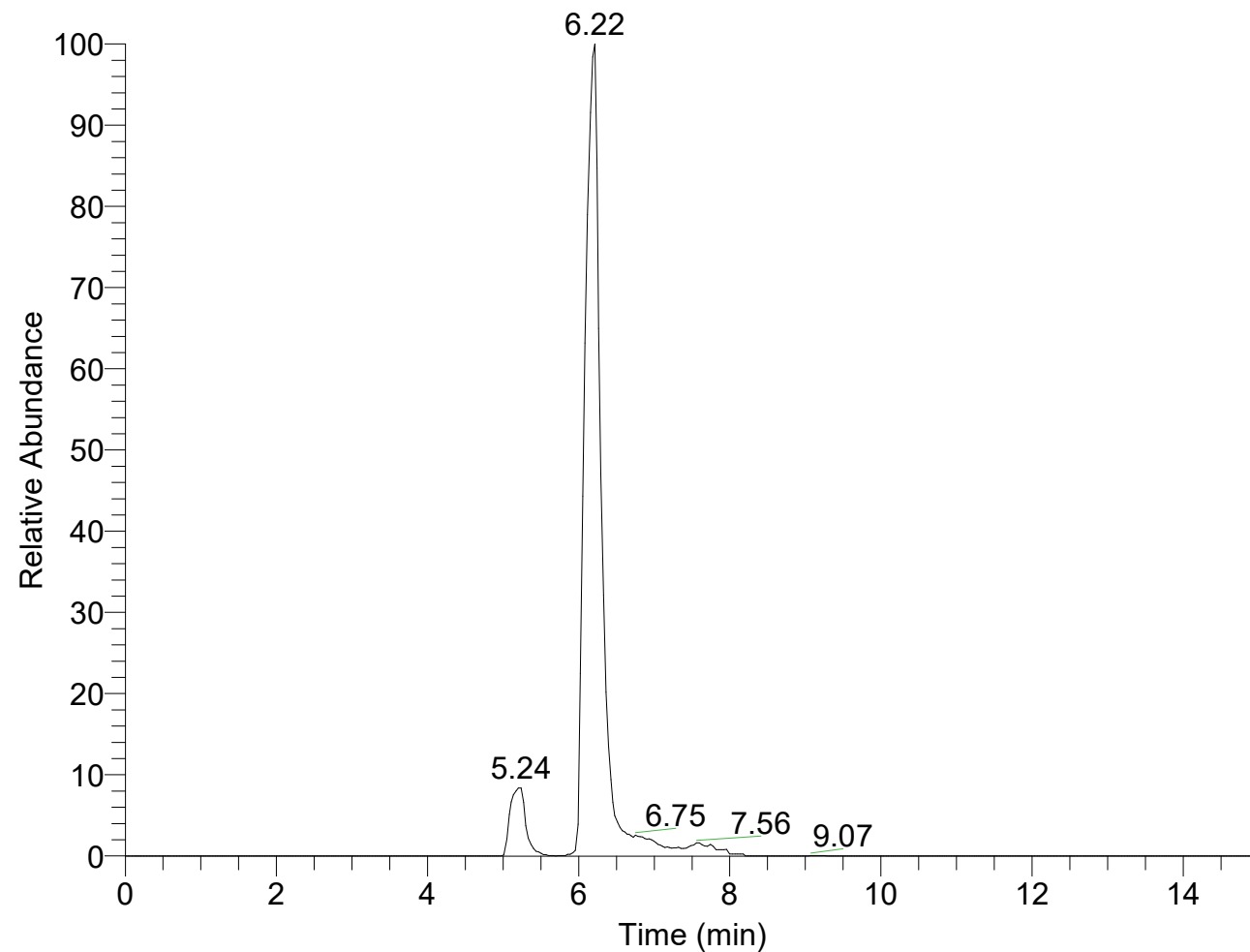
NL: 3.95E6

m/z=
912.5424-912.5516 F:
FTMS - p ESI Full ms
[70.0000-1000.0000]
MS A_point01mg_mL

A_point01mg_mL #1833 RT: 6.21 AV: 1 NL: 3.85E6
T: FTMS - p ESI Full ms [70.0000-1000.0000]



RT: 0.00 - 15.01 SM: 7B



NL: 3.89E6

m/z=

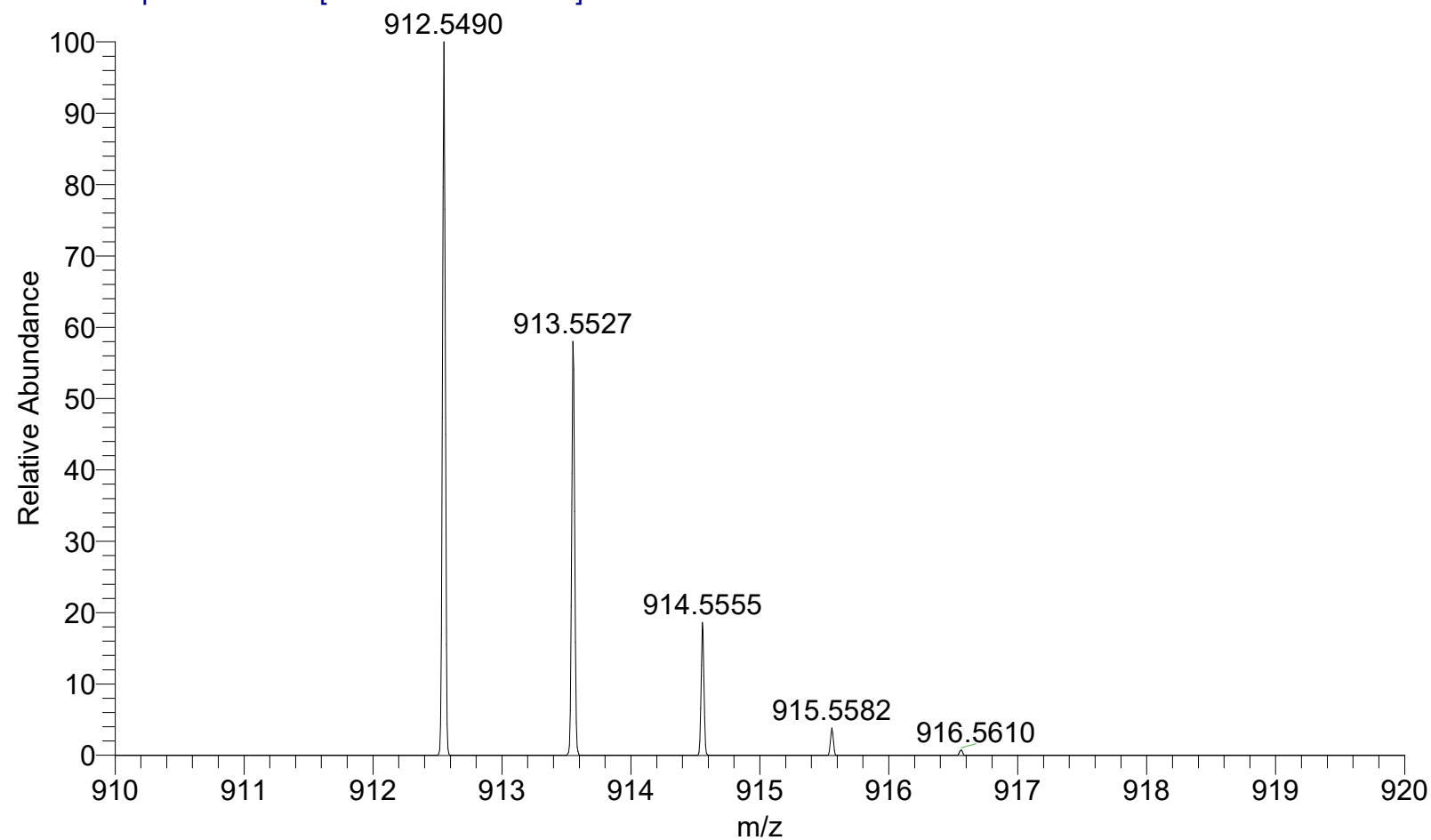
912.5424-912.5516 F:

FTMS - p ESI Full ms

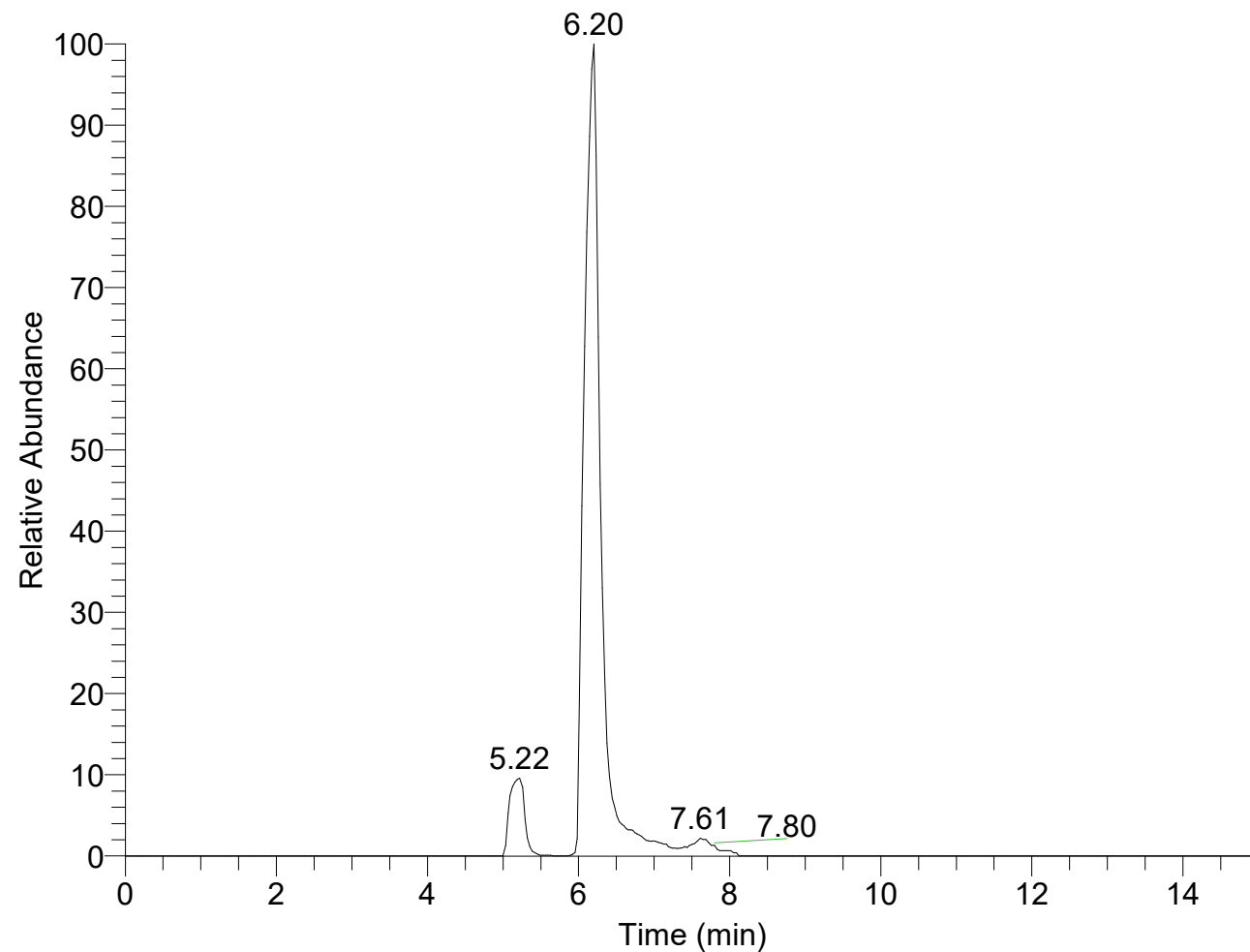
[70.0000-1000.0000]

MS B_point01mg_mL

B_point01mg_mL #1769 RT: 6.22 AV: 1 NL: 4.29E6
T: FTMS - p ESI Full ms [70.0000-1000.0000]



RT: 0.00 - 15.01 SM: 7B



NL: 3.75E6

m/z=
912.5424-912.5516 F:
FTMS - p ESI Full ms
[70.0000-1000.0000]
MS C_point01mg_mL

C_point01mg_mL #1768 RT: 6.20 AV: 1 NL: 3.68E6
T: FTMS - p ESI Full ms [70.0000-1000.0000]

